

JVC



For Windows®

JLIP CAPTURE PACK

JLIP CAPTURE-PACK
ENSEMBLE JLIP CAPTURE
JLIP CAPTURE PAKKET
PAQUETE JLIP CAPTURE
PACCHETTO JLIP CAPTURE
JLIP CAPTURE PACK
JLIP-SIEPPAUSPAKKAUS
JLIP CAPTURE PACK
JLIP BILDEOVERFØRINGS-
SPAKKE
JLIP摄录组件
ПРОГРАММА JLIP CAPTURE

ENGLISH

DEUTSCH

FRANÇAIS

NEDERLANDS

CASTELLANO

ITALIANO

DANSK

SUOMI

SVENSKA

NORSK

中文

РУССКИЙ

HS-V16KITE

BEFORE OPERATION

VOR DER INBETRIEBNAHME
AVANT DE COMMENCER
VOOR GEBRUIK
ANTES LA OPERACION
PRIMA DI INIZIARE
FØR BRUGEN
ENNEN KÄYTTÖÄ
INNAN DU SÄTTER IGÅNG
FØR BRUK
操作之前
ПЕРЕД ЭКСПЛУАТАЦИЕЙ

INSTRUCTIONS

BEDIENUNGSANLEITUNG / MODE D'EMPLOI
GEBRUIKSAANWIJZING / MANUAL DE INSTRUCCIONES
MANUALE DI ISTRUZIONI / INSTRUKTIONSBOG
KÄYTTÖOHJEET / ANVISNINGAR
BRUKSANVISNING / 使用说明书
ИНСТРУКЦИЯ



LYT0803-001A

IMPORTANT (For owners in U.K.)

Connection to the mains supply in the United Kingdom.

DO NOT cut off the mains plug from this equipment. If the plug fitted is not suitable for the power points in your home or the cable is too short to reach a power point, then obtain an appropriate safety approved extension lead or consult your dealer.

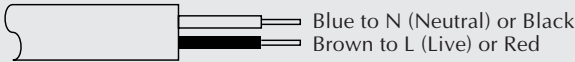
BE SURE to replace the fuse only with an identical approved type, as originally fitted, and to replace the fuse cover.

If nonetheless the mains plug is cut off ensure to remove the fuse and dispose of the plug immediately, to avoid a possible shock hazard by inadvertent connection to the mains supply.

If this product is not supplied fitted with a mains plug then follow the instructions given below:

DO NOT make any connection to the Larger Terminal coded E or Green.

The wires in the mains lead are coloured in accordance with the following code:



If these colours do not correspond with the terminal identifications of your plug, connect as follows:

Blue wire to terminal coded N (Neutral) or coloured black.

Brown wire to terminal coded L (Live) or coloured Red.

If in doubt — consult a competent electrician.

Some Do's And Don'ts On The Safe Use Of Equipment

This equipment has been designed and manufactured to meet international safety standards but, like any electrical equipment, care must be taken if you are to obtain the best results and safety is to be assured.

- DO** read the operating instructions before you attempt to use the equipment.
- DO** ensure that all electrical connections (including the mains plug, extension leads and interconnections between pieces of equipment) are properly made and in accordance with the manufacturer's instructions. Switch off and withdraw the mains plug when making or changing connections.
- DO** consult your dealer if you are ever in doubt about the installation, operation or safety of your equipment.
- DO** be careful with glass panels or doors on equipment.
- DON'T** continue to operate the equipment if you are in any doubt about it working normally, or if it is damaged in any way — switch off, withdraw the mains plug and consult your dealer.
- DON'T** remove any fixed cover as this may expose dangerous voltages.
- DON'T** leave equipment switched on when it is unattended unless it is specifically stated that it is designed for unattended operation or has a standby mode. Switch off using the switch on the equipment and make sure that your family knows how to do this. Special arrangements may need to be made for infirm or handicapped people.
- DON'T** use equipment such as personal stereos or radios so that you are distracted from the requirements of road safety. It is illegal to watch television whilst driving.
- DON'T** listen to headphones at high volume, as such use can permanently damage your hearing.
- DON'T** obstruct the ventilation of the equipment, for example with curtains or soft furnishings. Overheating will cause damage and shorten the life of the equipment.
- DON'T** use makeshift stands and NEVER fix legs with wood screws — to ensure complete safety always fit the manufacturer's approved stand or legs with the fixings provided according to the instructions.
- DON'T** allow electrical equipment to be exposed to rain or moisture.

ABOVE ALL...

- **NEVER** let anyone especially children push anything into holes, slots or any other opening in the case — this could result in a fatal electrical shock;
- **NEVER** guess or take chances with electrical equipment of any kind — it is better to be safe than sorry!

IMPORTANT**TO CUSTOMERS:****MAKE SURE TO READ THIS CAREFULLY BEFORE OPENING THE SEALED SOFTWARE PACKETS**

Thank you for purchasing our product. In order to start using the software programme enclosed, you are required to accept the terms and conditions of the agreement as provided below.

Software Licence Agreement

This is a legal agreement between you (either an individual or an entity) and Victor Company of Japan, Limited (JVC). By opening the sealed software packages and/or by using the Programme, you are agreeing to be bound by the terms of this Agreement. Should you not agree to the terms hereof, return the unopened software packets and the accompanying items to the place where you obtained them.

1. GRANT OF LICENCE

This Licence Agreement (Agreement) permits you to use the software programme (Programme) enclosed in this package and/or the accompanying written material (e. g. printed manuals). Although you are also granted licence to load the Programme into temporary memory (i. e. RAM) or install the Programme once into permanent memory (e. g. hard disk, CD-R, or other storage device) of one (1) computer system, you are strictly prohibited to install the Programme on a network server for the sole purpose of internal distribution.

2. COPYRIGHT

Notwithstanding the provision of Article 1 hereof, any copyright in the Programme is owned exclusively by JVC and is protected by the Japanese copyright law, copyright laws of other countries, as applicable, and relevant provisions under international treaties including the Berne Convention for the Protection of Literary and Artistic Works, as amended, and the Universal Copyright Convention, as amended. Therefore, you must treat the Programme like any other copyrighted material except that you may either (a) make one (1) copy of the Programme solely for your personal backup or archival purposes, or (b) transfer the Programme to a single hard disk, provided that you keep the original solely for your personal backup or archival purposes.

3. RESTRICTION ON THE PROGRAMME

You may not reverse engineer, decompile, disassemble, revise or modify the Programme, except to the extent that such restriction is expressly prohibited by applicable law. JVC and its distributors and dealers shall not be liable for any claims or defects etc. arising out of or in connection with such prohibited activities as indicated in this Agreement.

4. OTHER RESTRICTIONS

You may not rent, lease or transfer the Programme to any third party nor let such a party use the Programme.

5. LIMITED WARRANTY

JVC warrants that any media in which the Programme is embodied (e.g. floppy discs, CD-ROM, etc.) are free from any defects in materials and workmanship for a period of thirty (30) days from the date of your purchase and that any hardware accompanying the Programme is also free from defects to the extent provided in the attached Warranty Form. JVC's entire liability and your exclusive remedy in connection with the Programme shall be, at JVC's option, either (a) return of the price paid, or (b) replacement of defective Programme media.

6. DISCLAIMER OF WARRANTIES

EXCEPT FOR THE EXPRESS WARRANTIES STATED HEREIN AND TO THE EXTENT PERMITTED BY APPLICABLE LAW, JVC AND ITS SUPPLIERS DISCLAIM ANY OTHER WARRANTIES, EITHER EXPRESS OR IMPLIED, INCLUDING BUT NOT LIMITED TO IMPLIED WARRANTIES OF MERCHANTABILITY AND FITNESS FOR A PARTICULAR PURPOSE IN REGARD TO THE PROGRAMME AND THE ACCOMPANYING PRINTED MATERIALS.

7. LIMITED LIABILITY

TO THE EXTENT PERMITTED BY APPLICABLE LAW, IN NO EVENT SHALL JVC AND ITS SUPPLIERS BE LIABLE FOR ANY INDIRECT, SPECIAL, INCIDENTAL OR CONSEQUENTIAL DAMAGES WHATSOEVER, REGARDLESS OF THE FORM OF ACTION WHETHER IN CONTRACT, TORT, STRICT PRODUCT LIABILITY OR OTHERWISE (INCLUDING BUT NOT LIMITED TO DAMAGES FOR LOSS OF PROFITS, BUSINESS INTERRUPTION, LOSS OF BUSINESS INFORMATION OR ANY OTHER PECUNIARY LOSS) ARISING OUT OF OR IN CONNECTION WITH THE USE OF OR INABILITY TO USE THE PROGRAMME, EVEN IF JVC HAS BEEN ADVISED OF THE POSSIBILITY OF SUCH DAMAGES.

Victor Company of Japan, Limited

MAJOR FEATURES	5 – 6
GETTING STARTED	7
Provided Accessories	7
Operating Environment	7
CONNECTIONS	8 – 9
INSTALLATION	10
Presto! Mr. Photo Gold	11 – 16
NOTICE FOR USERS	17
TECHNICAL SUPPORT FOR REGISTERED USERS	18

CAUTION:

- Operate this equipment according to the operating procedures described in this manual.
- Use only the provided CD-ROM. Never use any other CD-ROM to run this software.
- Do not attempt to modify this software.
- Changes or modifications not approved by JVC could void user's authority to operate the equipment.

How to handle a CD-ROM

- Take care not to soil or scratch the mirror surface (opposite to the printed surface). Do not write anything or put a sticker on either the front or back surface. If the CD-ROM gets dirty, gently wipe it with a soft cloth outward from the centre hole using a circular motion.
- Do not use conventional disc cleaners or cleaning spray.
- Do not bend the CD-ROM or touch its mirror surface.
- Do not store your CD-ROM in a dusty, hot or humid environment. Keep it away from direct sunlight.

- The Readme.TXT file provides additional information for setup and information that is not included in the instruction manual. Please read the file before installing the provided software programme.
- You can find the latest information (in English) on the provided software programme at our world wide web server at <http://www.jvc-victor.co.jp>.

Two software programmes are provided.

JLIP Video Capture

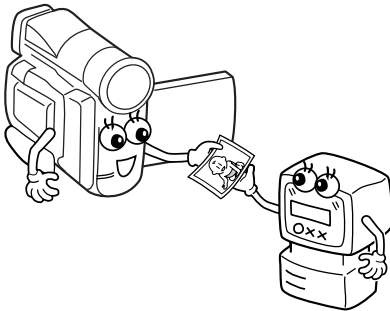
Video Capture Facility

Video images from a video camera can be captured as still images with 16.7 million colours through the serial port (RS-232C) of a Windows®-operated computer.

JLIP Control Facility

With a JLIP compatible video camera,

- all basic video operations can be executed via the computer display;
- up to 99 images can be captured automatically with Programme Video Capture (playing tape — scanning — transferring to PC).



JLIP Video Producer

JLIP Control Facility

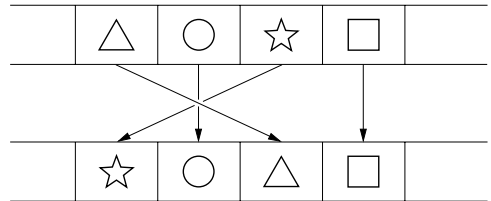
With a JLIP-compatible video camera,

- all basic video operations can be executed on the computer display;
- programmed video playback (up to 99 programmes) or assemble editing can be performed.

Assemble Editing

Selected scenes on a pre-recorded tape can be edited in a specified sequence.

**Pre-recorded tape
(on video camera)**



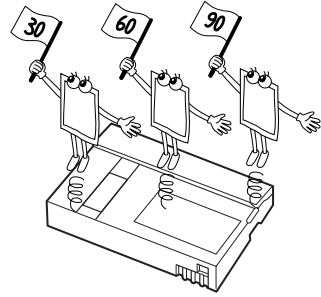
**Recording tape
(on VCR)**

JLIP Video Capture/JLIP Video Producer Instruction Book files are located in the CD-ROM's "JVC\Docs" folder.

Advanced Applications

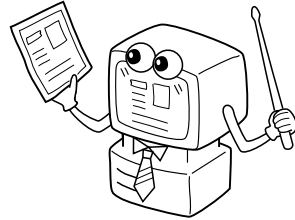
Create title indexes for your video collection

Title index images can be captured from your favorite recordings using the Interval Capture mode. Print the captured index images on your PC printer using the computer's Print Screen facility, then attach them to your cassettes.



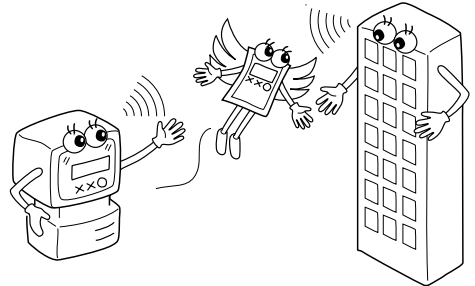
Business presentations

Images captured from video can be incorporated into business documents to spice up your presentations.



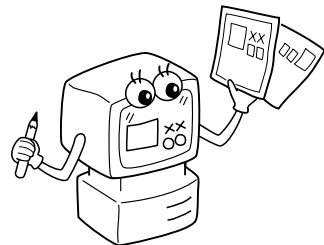
Internet homepage

Images captured from video can be incorporated in your Internet homepage using image editing software.

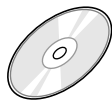


Video journal and postcards

Create your own original postcards, party invitation cards and the like or keep a video journal.



Provided Accessories



CD-ROM including:

- JLIP Video Capture
- JLIP Video Producer
- Presto! Mr. Photo Gold
 - Mr. Photo
 - PhotoAlbum
 - ImageFolio



PC Connection Cable



JLIP Cable (4 pole – 4 pole)



Edit Cable (4 pole – 2 pole)

Operating Environment

- Personal Computer with Microsoft® Windows® 95/98/Me/2000 Professional
- CPU: Intel® Pentium® or better processor
- Minimum RAM requirement: 32 MB
- Available Hard Disk space of at least 20 MB for JVC Software
Recommended 140 MB for Presto! Mr. Photo Gold
(You can select which applications from Mr. Photo Gold you wish to install.)
- Colour display capable of at least 800 x 600 pixels, 65,536 colours
Recommended 1024 x 768 pixels, 16.77 million colours
- 1 free serial transmission port, compatible with 9600 bps or higher transmission rate, connectable to RS-232C with 9 pin serial connector
(Recommended compatible with UART 16550A)
- Mouse (Windows® compatible)
- CD-ROM drive

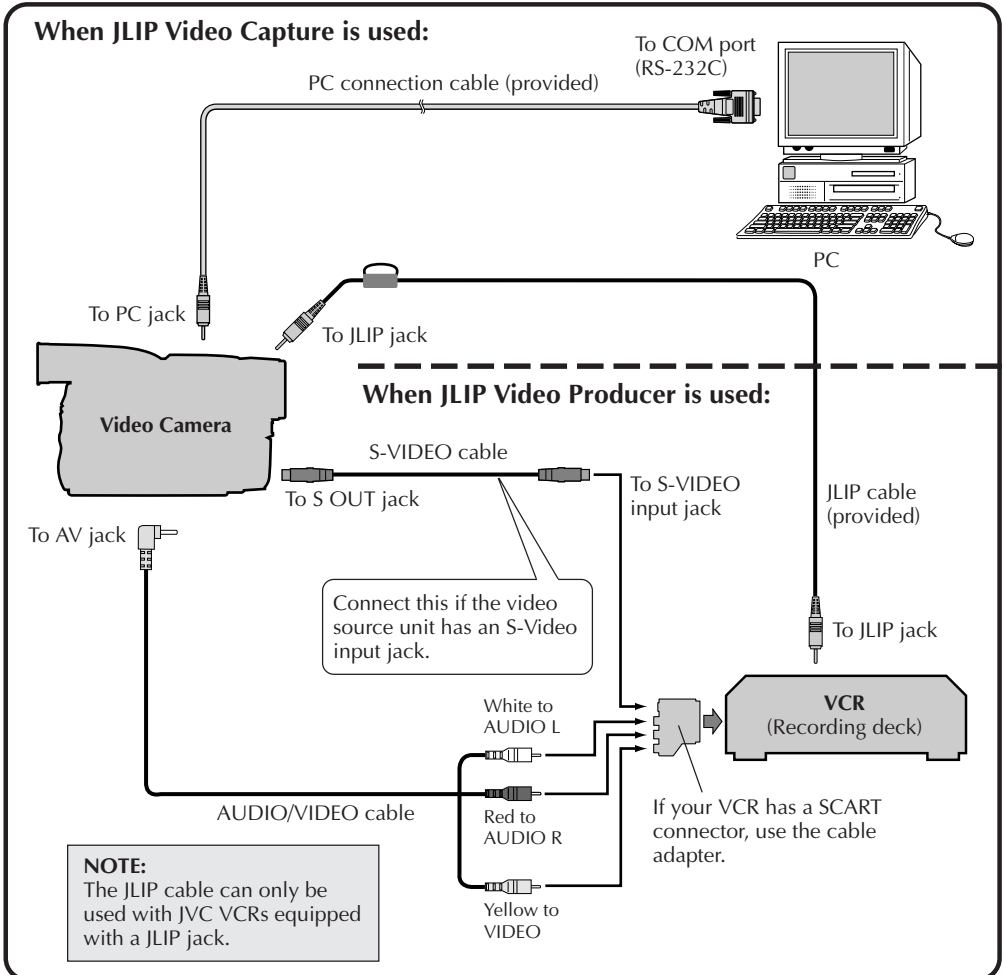
NOTE:

An optional 9 pin serial conversion adapter is required for computers using a serial communication port other than a standard 9 pin.

- * The system requirements information above is not a guarantee that the provided software will work on all personal computers meeting those requirements.
- * Microsoft® and Windows® are either registered trademarks or trademarks of Microsoft Corporation in the United States and/or other countries.
- * **JLIP** is a registered trademark of JVC.
JLIP stands for Joint Level Interface Protocol, a new communication protocol which allows AV units equipped with a JLIP terminal to be controlled by a personal computer.
- * Other product and company names included in this instruction manual are trademarks and/or registered trademarks of their respective holders.

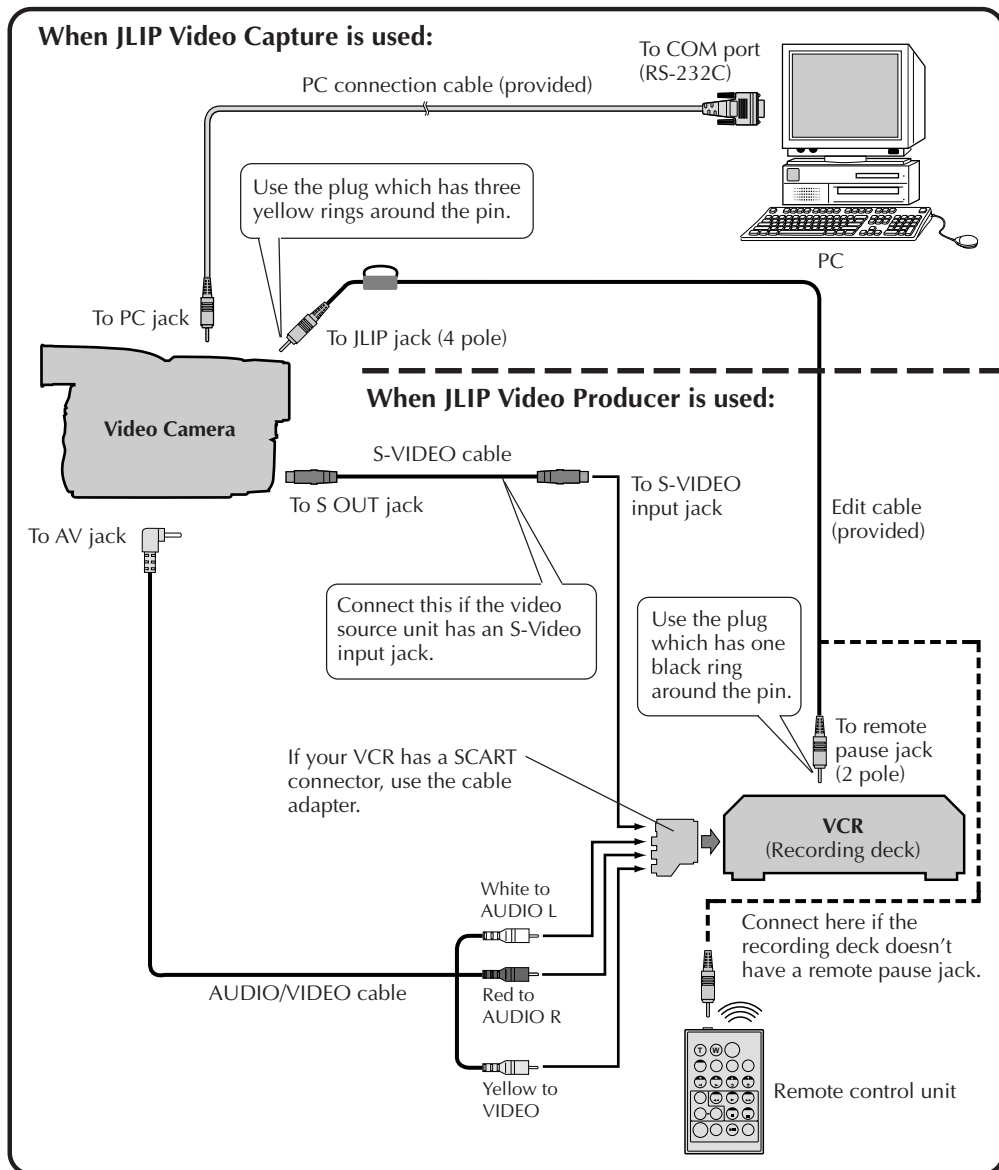
- To assure safety, make sure all units are turned off before making any connections.
- We recommend that you use the AC Power Adapter/Charger.
- When a core filter is attached to a cable, be sure to plug the connector equipped with the core filter into the video camera.
- Do not make any connections to the video camera's DV OUT connector.

WHEN CONNECTED TO A VCR EQUIPPED WITH A JLIP JACK



WHEN CONNECTED TO A VCR NOT EQUIPPED WITH A JLIP JACK

When using a VCR not equipped with a JLIP jack, set your VCR brand using the remote control unit, then perform editing using the remote control.

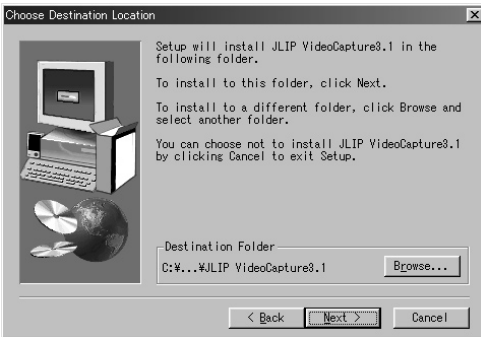
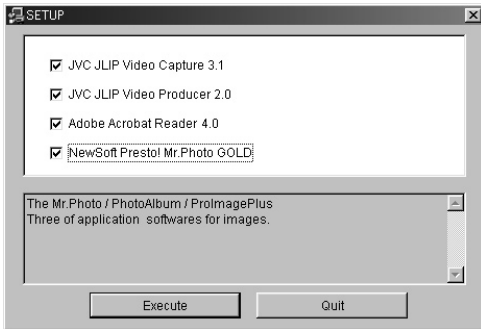


INSTALLATION

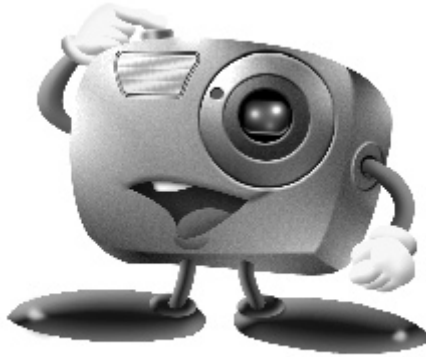
For details on the basic operations of Windows® 95/98/Me/2000 Professional, please see your Windows® 95/98/Me/2000 Professional or PC instruction manual.

Starting Windows® 95/98/Me/2000 Professional

- Quit any other software you are using. (Check that there are no other application icons on the task bar.)



- 1 Insert the supplied CD-ROM disc into the CD-ROM drive.
 - The **SETUP** window should appear after a few moments.
 - Perform the following operation if the setup window does not appear.
 - Double click **My Computer**.
 - Double click the **CD-ROM** icon.
 - Go to Step 2.
- 2 Click **Execute** on the **SETUP** window.
 - If the application has already been installed, click on those application items which do not need to be installed to remove the check mark displayed.
- 3 Follow the on-screen instructions.
- 4 Click **Quit** on the **SETUP** window when installation is complete.



Mr. Photo Gold:

Presto! Mr. Photo
Presto! PhotoAlbum
Presto! ImageFolio

For Windows®

- Please consult your nearest NewSoft service center for technical support. (see next page)
- Mr. Photo Gold Instruction Book files are located in the CD-ROM's "Newsoft\Manual" folder.

Copyright

Copyright ©1998-2001, NewSoft Technology Corp. All Rights Reserved. No portions of this document may be copied or reproduced in any manner without a prior written permission from NewSoft Technology Corp. (NewSoft). NewSoft has no warranties to this documentation and disclaims any implied warranty of merchantability or fitness for a particular purpose. All the information contained herein is subject to change without notice.

Trademarks

IBM, PC and VGA are registered trademarks of International Business Machines Corporation.

MMX is a registered trademark of Intel Corporation.

MS-DOS, Windows®, Windows® 95/98/2000, Windows® Me, Windows® NT and Microsoft® are registered trademarks of Microsoft® Corporation. All other trademarks are the properties of their respective owners.

Technical Support

U.S.A: NewSoft America Inc.

E-mail: tech@newsoftinc.com

<http://www.newsoftinc.com>

Taiwan: NewSoft Technology Corp.

E-mail: support@newsoft.com.tw

<http://www.newsoft.com.tw>

Japan: NewSoft Japan Corp.

E-mail: support@newsoft.co.jp

<http://www.newsoft.co.jp>

Europe: NewSoft German Representative Office

E-mail: sales-eu@newsoft.eu.com

Mr. Photo stores and catalogs all of your valuable photos and videos. You can sort them and their film “rolls” by date and title, and search by keyword, date, or other image or video properties. Drag-and-drop photos to the Application Bar to create photo masterpieces using ready-made templates. Click the Slide Show icon to view all the selected photos in a “roll” of film, or drag-and-drop a photo or video to the E-mail icon to send it to family and friends.

Features

- Acquire photos from TWAIN digital cameras, scanners, floppy disks, PhotoCDs, and the Internet.
- Catalog photos and videos in “rolls” of film that you can customize and rearrange.
- Enhance photos instantly (remove red-eye, adjust brightness/contrast, blur/sharpen).
- Drag-and-drop photos to print, e-mail, create HTML slide shows, or post on the Internet.
- Drag-and-drop photos and videos to other applications for further editing or for creative projects.
- Save photos as a screen saver or as wallpaper.
- Print stickers, photos, photo catalogs, and reports.
- Send photo or video files via E-mail.
- Create MPEG-1 video files.

System Requirements

- Digital Camera plus digital camera software.
- Color Scanner, if you intend to scan photos.
- A PC with at least a 586 microprocessor and 32 MB RAM.
- Minimum 30 MB hard disk space after installation.
- CD-ROM drive.
- Super VGA display card.
- Windows® 95/98/Me/2000 or Windows® NT 4.0.

NOTE:

The Mr. Photo Gold software can only be used with JVC digital video cameras in conjunction with the JLIIP Video Capture software.

Presto! PhotoAlbum helps you create electronic photo albums that keep your memories alive forever. Just drag-and-drop photos, frames, clip art, textures, and special effects. You can also personalize your albums with voice-overs and sound effects, then produce album slide shows to post to the Internet or send completed albums by e-mail.

Features

- Scan or import your photos from digital cameras and scanners.
- Auto color correction for input photos.
- Drag-and-drop easy-editing operation.
- Photo Browser with thumbnail views of photos.
- Sharing albums with an Internet Browser.
- Library of over 500 clip arts for decoration.
- Sound attachment with albums, pages and photos.
- Independent album playback support.
- Supports popular file formats: TIF, PCX, BMP, TGA, JPG, PCD, WMF, FPX, PNG, etc.

System Requirements

- An IBM PC 586, Pentium or compatible computer.
- A CD-ROM drive.
- A hard disk drive with at least 50 MB space available to hold and run the program effectively.
- At least 32 MB of RAM (preferably 64 MB).
- Windows® 95/98/Me/2000 or Windows® NT 4.0.

Recommended System Requirements

- A sound card with a microphone.
- A color printer.

ImageFolio is a comprehensive multimedia image-processing program for Windows® 95/98/2000/Me or Windows® NT 4.0. It enables you to process photographs, graphics and drawings captured from scanners, VCRs, a laser discs, digital cameras, video capture boxes, etc.

You can create new images by using the ImageFolio's powerful tools. This sophisticated set of image-editing tools enables you to quickly create a new images or enhance preexisting ones. With this program, your imagination is your only limit!

Features

Image Input

- Capture images with flatbed/hand-held scanners, digital cameras, capture boxes, etc.
- TWAIN interface support for automatic fine-tuning during scanning.
- Auto & Semi-auto image stitching for large images.
- Load/save images in popular file formats such as TIF, PCX, BMP, TGA, JPG, PCD, WMF, and PNG.
- Flash Pix format support.
- Black & White, 16-bit gray, 16/256 grayscale, index 16/256 color, and 24-bit/48-bit true color image format selectivity.

Image Output

- Progressive JPEG compression/decompression to save disk space.
- Printer Gamma adjustment to improve output quality.
- Print color-adjustment variations allows previewing before printing.
- Monitor Gamma adjustment to calibrate display.
- OLE 2.0 support for stand-alone editing.
- Easy artwork design for home page production and HTML applications.

Image Editing and Processing

- Image Manager functions as an image database and uses folders to manage and preview files.
- Windows® compliant user interface with drag-and-drop feature.
- Image format conversion functions such as color to gray and 256-color to 24-bit true color.
- Simultaneous document processing.
- Document layers for complicated object organization.
- Drag-and-drop images between documents.
- Precise color control by setting channels or using a palette.

- Complete set of drawing and painting tools such as Line, Paintbrush, Airbrush, Color Gradation, Eraser, Zoom, Text, Eyedropper, Rotate, Hue/Saturation brush, Brightness/Darkness brush, and Blur/Sharpen brush.
- Definable Image Hose tool for quick insertion of image set.
- Anti-alias feature works with all graphic tools to improve drawing quality.
- Full selection of tools for easily masking image irregularities.
- One-touch Magic 3D effects with definable light source.
- One-touch shadow generation with variable light direction.
- Elegant templates for easy and practical use.
- Fine-tuning functions to adjust brightness, contrast, hue, saturation, tone distribution, and so on.
- Filters to produce special effects such as smooth, sharpen, edge detection, emboss, and mosaic.
- Effect browser provides actual-sized previews, for all the fine-tuning functions and filters.
- 16- and 32-bit Adobe™ plug-in filter interface.
- Image editing and photo retouching functions such as rotating, flipping, inverting, and rescaling.
- User-friendly zoom-in bit editing function for detailed image modification.

System Requirements

The following hardware devices and software are required to run the software:

- A PC with at least a 586 microprocessor, or compatible computer.
- One CD-ROM drive.
- One hard disk drive with at least 60 MB space available.
- At least 32 MB of RAM (preferably 64 MB).
- Windows® 95/98/2000/Me or Windows® NT 4.0.

To make full, efficient use of the program, the following additional elements are highly recommended:

- 50 MB or more of virtual memory.
- A scanner that supports TWAIN.
- A TWAIN source manager if you already have a scanner installed.
- A color printer supported by Windows®.

Use of this software is authorized according to the terms of the software licence.

When contacting the nearest JVC office or agency in your country about this software (refer to the JVC Worldwide Service Network at <http://www.jvc-victor.co.jp/english/worldmap/index-e.html>), please fill out the following and have the appropriate information ready.

Product Name		
Model		
Problem		
Error Message		
PC	Manufacturer	
	Model	<input type="checkbox"/> Desktop <input type="checkbox"/> Laptop
	CPU	
	OS	
	Memory	MB
	Available Hard Disk Space	MB

Please note that it may take some time to respond to your questions, depending on their subject matter.

JVC cannot answer questions regarding specifications or performance of provided NewSoft products, or basic operation of your PC.

JVC Support for:**U.K. & IRELAND****JVC (U.K.) Limited**

14 Priestley Way, London
NW2 7BA, United Kingdom

Tel : (0181) 450-3282
Fax : (0181) 452-2534

JVC IRELAND

(Branch of JVC(U.K.) Limited)
JVC HOUSE Carriglea Industrial Estate
Naas Road, Dublin 12, Republic of Ireland
Tel : (01) 460-2288 Fax : (01) 456-7522

DEUTSCHLAND**JVC DEUTSCHLAND GMBH**

Postfach 10 05 62, Grüner Weg 12, 61169
Friedberg/Hessen, Deutschland

Tel : (06031) 9390 Fax : (06031) 183 83

BELGIE/LUXEMBURG**JVC BELGIUM N.V.**

Klein Eilandstraat 3 - 1070 BRUSSEL, België
Tel : (02) 529 42 11 Fax : (02) 520 83 12

ESPAÑA**JVC ESPAÑA S.A.**

Ctra. Gracia Manresa Km. 14' 750 Edificio Can
Castanyer, 08190 Sant Cugat del Vallés, España
Tfno : (93) 565 32 16 Fax : (93) 565 32 18

ÖSTERREICH**JVC AUSTRIA GMBH**

Slamastrasse 43 A-1230, Wien, Austria
Tel : (0222) 610370 Fax : (0222) 610377

SVERIGE**JVC SVENSKA AB**

Veddestavägen 15, 175 62 Järfälla-Stockholm, Sweden
Tel : (08) 7950400 Fax : (08) 7950450

SCHWEIZ/SUISSE/SVIZZERA**SPITZER ELECTRONIC AG**

Mühlemattsstrasse 13 4104 Oberwil, Suisse
Tel : 061 405 1111 Fax : 061 402 0434

PORTUGAL**ORIELA, SA**

Campo de Santa Clara, 160-A, 1100, Lisboa, Portugal
Tel : 01 888 4731 Fax : 01 886 7871

FRANCE**JVC FRANCE S.A. DIVISION VIDEO**

102, boulevard Heloise,
95104 Argenteuil CEDEX, France
Tel : 01.39.96.33.33 Fax : 01.39.47.73.78

NEDERLAND**JVC NEDERLAND B.V.**

JVC Plein DE Heyderweg 2,
2314 XZ Leiden, Nederland
Tel : (071) 5453333 Fax : (071) 5894674

BELGIQUE/LUXEMBOURG**JVC BELGIUM S.A.**

Rue de la Petite Ile 3 -1070 BRUXELLES, Belgique
Tel : (02) 529 42 11 Fax : (02) 520 83 12

ITALIA**JVC ITALIA S.p.A.**

Via Cassanese 224 Palazzo Tiepolo, 20090
Segrate Milano Oltre, Italia
Tel : (02) 26.99.161 Fax : (02) 26.92.1820

DANMARK**JVC DANMARK A/S**

Helgeshøj Alle 30 DK-2630 Taastrup, Danmark
Tel : 43 50 90 00 Fax : 43 50 90 81

NORGE**JVC NORGE A/S**

P.O.BOX 2012, Postterminalen 3103 Tonsberg, Norge
Tel : 33 36 52 00 Fax : 33 36 52 99

SUOMI**OY HEDENGREN AB**

Mänkimiehentie 2 02780 Espoo, Finland
Tel : 9-68281 Fax : 9-810933

GREECE**ΗΛΕΚΤΡΟΒΙΟΜΗΧΑΝΙΚΗ ΕΛΛΑΣ Α.Ε.**

Πετριωας 62, 183 46 Μοσχάτο, Αθίνα, ΕΛΛΑΔΑ
Tel : 01-4832855 Fax : 01-4832557

For other countries, refer to the JVC Worldwide Service Network at <http://www.jvc-victor.co.jp/english/worldmap/index-e.html>

JVC

VICTOR COMPANY OF JAPAN, LIMITED
ВИКТОР КОМПАНИ ОФ ДЖАПАН, ЛИМИТЕД
12,3-чотэ, Морийя-чо, Канагава-ку,
Йокохама, Канагава 221-8528, Япония

HS-V16U Instructions

This software allows you to load images played back by a digital video camera as still images and program edit (dub) your favorite scenes from a digital camera to a video deck. It is also possible to manage and edit loaded images using the supplied Mr. Photo Gold.

This manual consists of two volumes.

- 1 BEFORE OPERATION :
Primarily describes connections and installation.
- 2 JLIP VIDEO CAPTURE/JLIP VIDEO PRODUCER :
Primarily describes how to load images and perform program edits. JLIP Video Capture/JLIP Video Producer Instruction Book files are located in the CD-ROM's "JVC\Docs" folder.

Supported OS : Supports Windows® operating systems including Windows® 2000/Me.

HS-V16U MODE D'EMPLOI

Ce logiciel vous permet de charger des images lues par un caméscope numérique en tant qu'images fixes et de faire le montage programmé (doublage) de vos scènes favorites d'un caméscope vidéo à une platine vidéo. Il est également possible de gérer et monter des images chargées en utilisant le logiciel Mr. Photo Gold fourni.

Ce mode d'emploi comporte deux volumes.

- 1 AVANT DE COMMENCER :
Décrit principalement les raccordements et l'installation.
- 2 JLIP VIDEO CAPTURE/JLIP VIDEO PRODUCER :
Décrit principalement la façon de charger les images et d'effectuer des montages programmés.
Les fichiers des modes d'emploi JLIP Video Capture/JLIP Video Producer sont situés dans le dossier "JVC\Docs" du CD-ROM.

Systèmes d'exploitation pris en charge :
Prend en charge les systèmes d'exploitation Windows®, incluant Windows® 2000/Me.

HS-V16U MANUAL DE INSTRUCCIONES

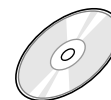
Este software le permite cargar imágenes reproducidas por una videocámara digital como imágenes fijas y editar (copiar) programas de sus escenas favoritas desde una cámara digital a una platina de vídeo. También es posible administrar y editar las imágenes cargadas empleando el Mr. Photo Gold suministrado.

Este manual consiste en dos volúmenes.

- 1 ANTES LA OPERACION :
Describe principalmente las conexiones y la instalación.
- 2 JLIP VIDEO CAPTURE/JLIP VIDEO PRODUCER :
Describe principalmente cómo cargar imágenes y realizar ediciones de programas.
Los archivos del manual de instrucciones JLIP Video Capture/JLIP Video Producer están ubicados en la carpeta "JVC\Docs" del CD-ROM.

Sistema operativo compatible :
Compatible con sistemas operativos Windows®, incluyendo Windows® 2000/Me.

Provided Accessories / Accessoires fournis / Accesorios suministrados



CD-ROM



PC Connection Cable
Cable de raccordement PC
Cable de conexión de PC



Edit Cable
Cable de montage
Cable de edición